



# Spoken Word

BY: KENNEDY T. CULVER

FEATURE FILM

---

# LOGLINE

---

A mute photographer, an anxious architect, and a doubtful interior designer become friends as they navigate through college life and grow as individuals.

# SYNOPSIS

A young man who can not speak, goes off to college to experience the world for himself. Maloy, who communicates through sign language, learns that he doesn't have to be as closed off as he used to be and that he will be accepted despite his disability. He constantly wonders what his voice would sound like now that he is a young adult. He gains two friends Navi and Athena. As their friendship blossoms, Maloy sees that Navi's mental health is dwelling and deals with competition for the end of the semester art show. Athena faces doubt with her future. Maloy, while he can't be vocal, he is there for his friends through his actions. While it was enough for Athena, it's not enough for Navi as she tries to take her own life. Maloy witnesses but is he able to call out her name before she does?

# MALOY.

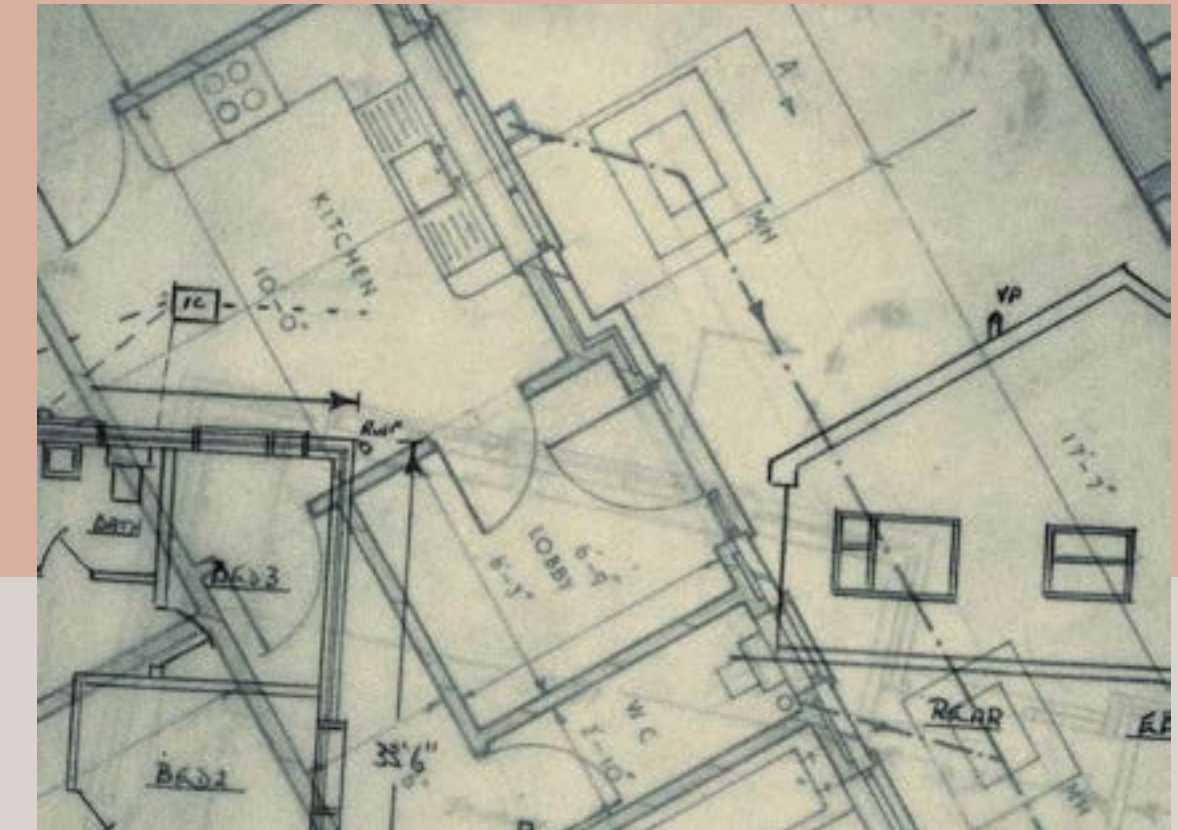


**M**aloy Wong is a 18 year old, Pacific Islander boy who became mute due to a car accident. He is very hesitant to approach others because he doesn't know if they would understand sign language. I keeps to himself and tries to not be perceived. He has a passion for photography, art, and manga/anime. He is an attractive young man and with a bright personality when he is comfortable with the ones around him. He does wonder what his voice would sound like because he has grown older. He wonders if it will range in alto or if there will be bass in his voice or if it would be pitchy.

**T**hrough out the film, Maloy's inner dialogue would have three voices. It will alternative from scene to scene. Because Maloy's voice is a mystery to him, it will also be a mystery to the audience.



# NAVI.



**N**avi Shah is a smart, bright, kind young Desi woman who doesn't understand her full potential. She is 18 years old and comes from an immigrant family. She lives in New York and goes to NYU as an Architecture major. Her family loves her deeply but puts unrealistic expectations on her that damages her mental health. She suffers from depression and anxiety. Under intense stress and pressure she suffers from panic attacks that seem to never end.

**S**he turns to substances to make her feel better and eventually starts to abuse them. Her personality changes and she becomes closed off. She is more aggressive and a little cold hearted. She could be described as the Black and White Swans from Swan Lake. That's how drastically her personality shifts. Her mental health deteriorates, cause her to think the only solution is to take her life. She finally is at the standpoint where her life is meaningless but as she continues her journey with her friends that slowly begins to change and attempts to take her life.

# ATHENA.

Athena is an 18 year old, African American girl who is intelligent. She attends NYU as an Interior Design major. She has a love for manga and anime. She is selfless when it comes to her friends and as they are to her. Athena is honest and wants the best for her friends, along with always standing up for what she believes in.

She clicks the most with Maloy because of their common interest of manga, anime, and art. She at times struggles to understand her potential in art and doubts that she will get into her program. She takes the journey in trying to find inspiration

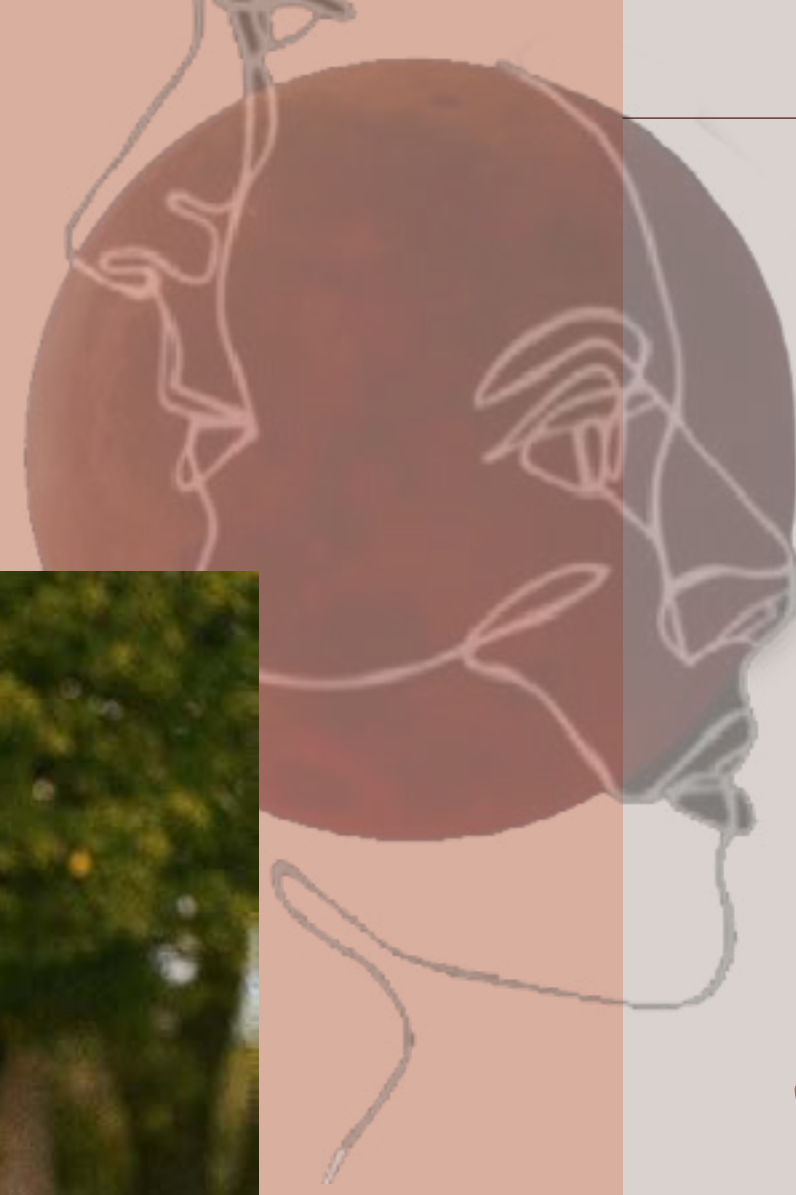


# TREATMENT

Maloy, since the age of seven had been mute due to a car accident. The doctors say that he hit the Broca's Area within his frontal lobe that enables him to speak. He uses sign language as a means to communicate. Since then his mother has had him hidden from the world because she was embarrassed that her son couldn't speak. When Maloy turned eight-teen, he made the decision to finally go off on his own and attend college. While his father and sister, Logan, support him, his mother doesn't in fear that he will face torment. Maloy takes this risk and gets on the flight to New York to attend NYU as a photography major.

When Maloy touches the ground in New York he is greeted by his Aunt Jennie and he is spectacle at first due to how she claimed his muteness as a phase. He is also hesitant because he is worried that not many know sign language let alone his Aunt. He warms up to her and his uncle. They help him move into his dorm and he meets his soon to be friend Navi.

Navi is a young woman who comes from a family of immigrants who love her deeply but have high expectations on her. As she struggles with anxiety and depression, she tries to figure out her way through young adult life. She befriends her roommate Athena and runs into Maloy. She has an understanding of sign language and befriended Maloy quickly. They go through the ups and downs of college and living on their own. Maloy tries his best to take on his classes without being able to speak and struggles to communicate with his professors and peers. A fellow student plagiarizes and Maloy witnesses. This student tries to intimidate Maloy and Maloy tries to find ways to navigate the situation. Navi continues to struggle with her mental health and turns to an unlikely friend from highschool. She begins to do heavy drugs and Maloy, along with Athena notice. They try to help Navi and be there for their friend but she continues to push them away. One day when Navi is drunk and listens to her toxic thoughts, she tries to end her life by stepping in front of traffic. Maloy witnesses this and screams her name before he pushes her out of the way. They both are safe and Navi notices that Maloy spoke for the first time.



KENNEDY T. CULVER IS A SCREENWRITER AND A DIRECTOR THAT STARTED OFF WITH WRITING SHORT STORIES SOME EVEN PUBLISHED WITH HER WRITING PROGRAM. SHE WOULD ALWAYS INVISION HER STORIES IN MOTION AND HOW SHE WANTED TO PUT MORE PEOPLE OF COLOR ON THE SCREEN. TO START OUT SHE WAS A PA FOR MUSIC VIDEOS FOR ARTISTS IN ATLANTA. SOON AFTER, KENNEDY CREATED A "COLOR SERIES" AND RELEASED "WHITE NOISE" AND "BLUE". SHE TOOK A HAITUS IN FILMING HER OWN PROJECTS TO GAIN MORE EXPERIENCE IN THE FILM INDUSTRY. SHE HAS WORKED ON SHOWS SUCH AS A PA ON MANY SHOWS SUCH AS WILD N OUT, DWANYE WADE'S THE CUBE, AND SECRET CHEF. SHE ROSE QUICKLY AND BECAME A PRODUCER ON SHOWS SUCH AS THE CIRCLE, LEGO MASTERS, AND SO YOU THINK YOU CAN DANCE. KENNEDY ALSO IS A CO-WRITER OF A SHORT FILM "DEPRESSION ISN'T REAL". THOUGH SHE WAS ACTIVELY WORKING SHE STILL MADE TIME FOR WRITING AND HAS CREATED AND COMPLETED SCREENPLAYS SUCH AS, "KILLING DOESN'T HURT", "DAWN OF NEW PANGEA",ALONG WITH THE SCRIPTS "HURRICANE". SHE ALSO HAS OTHERS THAT ARE STILL IN THE WORKS.

EMAIL ✉ [KENNEDY.CULVER14@GMAIL.COM](mailto:KENNEDY.CULVER14@GMAIL.COM)  
INSTAGRAM 📷 [@EUPHORIC\\_PRODUCTIONS](https://www.instagram.com/euphoric_productions)  
WEBSITE: [WWW.EUPHORICPRODUCTIONS.KTC.COM](http://WWW.EUPHORICPRODUCTIONS.KTC.COM)





THIS IS...

*Spoken  
Word*